

Performance F-P20F



EXPERT P20F

8" (200mm) Subwoofer

- Rubber surround catenary profil
Long life, reliability, high excursion

- "Dual Magnet" 4^{3/4}" (120mm)
High power, linearity

- Flax[®] cone
High rigidity, deep and controlled bass



- Fiberglass voice-coil material
Overheating reduction

WHAT MAKES THE DIFFERENCE

- "Dual Magnet" for More power
- FLAX[®] technology for an exclusive cone
- High rigidity for deep and controlled bass
- The best compromise for a small seal enclosure volume using (0.35 Cu ft – 10L)

TECHNICAL CHARACTERISTICS

Woofers: 8" (200mm)
Voice-coil: 2" (50mm)
Voice-coil height: 1^{1/8}" (28mm)
Magnet: 4^{3/4}" (120mm)
Max. power: 500 Watts

Nominal power: 250 Watts RMS
Sensitivity (2.83V/1m): 82.5dB
Impedance: 4 Ohms
Fréquence response: 39Hz - 500Hz

Performance F-P20F



**EXPERT
P20F 8" (200mm) SUBWOOFER**

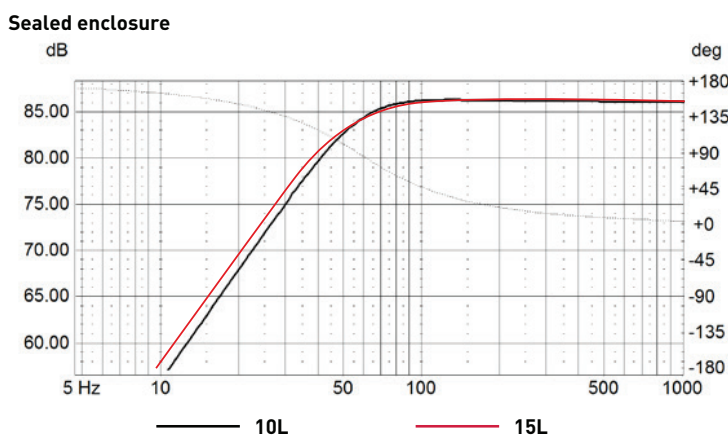


- FLAX® Cone
- Sealed and ported enclosure
- Small compact volume

SPECIFICATIONS

Nominal power	250W RMS	
Maximum power	500W	
Sensitivity (2.83V/1m)	82.5dB	
Cone	Flax®	
Surround	Rubber	
Nom. impedance	4 Ohms	
DC resistance	3.4 Ohms	
VC diameter	38mm	1 1/2"
VC height	28mm	1 1/8"
Former	Glass Fiber	
Layers	4	
Wire	Copper	
Inductance	1.7 mH	
Xmax	10mm	0 3/8"
Magnet dxh (mm)	120 x 32mm	4 3/4" x 1 1/4"
Flux density	0.75T	
Gap height	8mm	0 5/16"
Net weight	3200g	6 lbs

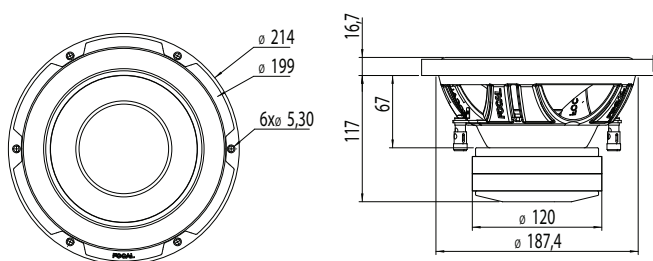
FREQUENCY RESPONSE / IMPEDANCE



PARAMETERS

Fs	38.5Hz
Vas	12L
Qts	0.56
Qes	0.61
Qms	5.5
Re	3.4 Ohms
Sd	216cm ²
Cms	0.18 mm/N
Mms	95g
BL	11.5 N/A
SPL	82.5 dB

MECHANICAL DRAWING



SUGGESTED APPLICATION

Sealed enclosure		Ported enclosure			
Volume	F-3 (Hz)	Volume	F-3 (Hz)	Ø port	Port length
10L 0.35 cu.ft.	52 Hz	10L 0.35 cu.ft.	45 Hz	7 cm - 2 3/4"	30 cm - 12"
15L 0.52 cu.ft.	50 Hz	15L 0.52 cu.ft.	35 Hz	7 cm - 2 3/4"	35 cm - 13 25/32"
		20L 0.70 cu.ft.	30 Hz	7 cm - 2 3/4"	35 cm - 13 25/32"

EXPERT P25F

10" (250mm) Subwoofer



• Rubber surround catenary profil
Long life, reliability, high excursion

• "Dual Magnet" 5^{11/16}" (145mm)
High power, linearity

• Flax[®] cone
High rigidity, deep and controlled bass

• Fiberglass voice-coil material
Overheating reduction

WHAT MAKES THE DIFFERENCE

- "Dual Magnet" for More power
- FLAX[®] technology for an exclusive cone
- High rigidity for deep and controlled bass
- Compact size for sealed or ported enclosure
- High excursion

TECHNICAL CHARACTERISTICS

Woofers: 10" (250mm)
Voice-coil: 2" (50mm)
Voice-coil height: 1^{3/8}" (35mm)
Magnet: 5^{11/16}" (145mm)
Max. power: 600 Watts

Nominal power: 300 Watts RMS
Sensitivity (2.83V/1m): 85dB
Impedance: 4 Ohms
Frequency response: 33Hz - 500Hz

EXPERT P25F 10" (250mm) SUBWOOFER



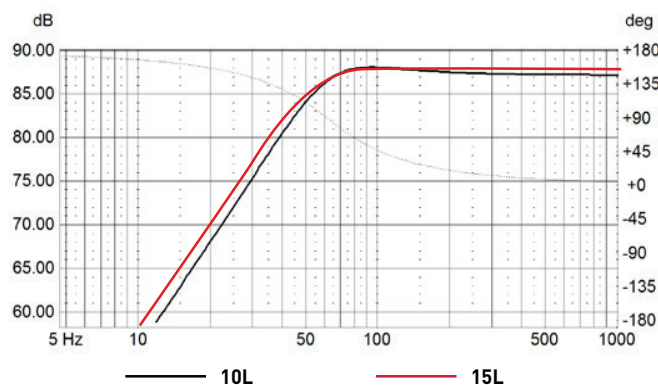
- FLAX® Cone
- Sealed and ported enclosure
- Small compact volume

SPECIFICATIONS

Nominal power	300W RMS
Maximum power	600W
Sensitivity (2.83V/1m)	85dB
Cone	Flax
Surround	Rubber
Nom. impedance	4 Ohms
DC resistance	3.7 Ohms
VC diameter	50mm 2"
VC height	35mm 1 ³ / ₈ "
Former	Glass Fiber
Layers	4
Wire	Copper
Inductance	2.7 mH
Xmax	14mm 0 ⁹ / ₁₆ "
Magnet dxh (mm)	145 x 40mm 5 ¹¹ / ₁₆ " x 1 ⁹ / ₁₆ "
Flux density	0.75T
Gap height	8mm 0 ⁵ / ₁₆ "
Net weight	5400g 10.8 lbs

FREQUENCY RESPONSE / IMPEDANCE

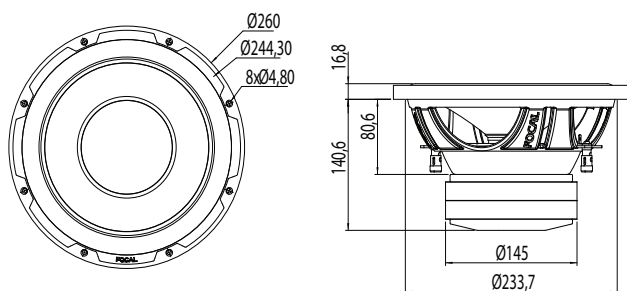
Sealed enclosure



PARAMETERS

Fs	31Hz
Vas	29L
Qts	0.45
Qes	0.51
Qms	4.5
Re	3.7 Ohms
Sd	347cm ²
Cms	0.17 mm/N
Mms	145g
BL	14.8 N/A
SPL	85 dB

MECHANICAL DRAWING



SUGGESTED APPLICATION

Sealed enclosure		Ported enclosure			
Volume	F-3 (Hz)	Volume	F-3 (Hz)	Ø port	Port length
10L 0.35 cu.ft.	52 Hz	25L 0.88 cu.ft.	33 Hz	8 cm - 3 ⁵ / ₃₂ "	35 cm - 13 ²⁵ / ₃₂ "
15L 0.52 cu.ft.	50 Hz	30L 1.05 cu.ft.	30 Hz	8 cm - 3 ⁵ / ₃₂ "	45 cm - 17 ²³ / ₃₂ "
20L 0.70 cu.ft.	48 Hz	35L 1.23 cu.ft.	27 Hz	8 cm - 3 ⁵ / ₃₂ "	45 cm - 17 ²³ / ₃₂ "
25L 0.88 cu.ft.	47 Hz				

EXPERT P30F

12" (300mm) Subwoofer

- Rubber surround catenary profil
Long life, reliability, high excursion

- Flax[®] cone
High rigidity, deep and controlled bass

- "Dual Magnet" 5^{11/16}" (145mm)
High power, linearity



- Fiberglass voice-coil material
Overheating reduction

WHAT MAKES THE DIFFERENCE

- "Dual Magnet" for More power
- FLAX[®] technology for an exclusive cone
- High rigidity for deep and controlled bass
- High power handling
- High excursion

TECHNICAL CHARACTERISTICS

Woofer: 12" (300mm)
Voice-coil: 2" (50mm)
Voice-coil high: 1^{3/8}" (35mm)
Magnet: 5^{11/16}" (145mm)
Max. power: 800 Watts

Nominal power: 400 Watts RMS
Sensitivity (2.83V/1m): 86.7dB
Impedance: 4 Ohms
Fréquency response: 27Hz - 500Hz

EXPERT P30F 12" (300mm) SUBWOOFER



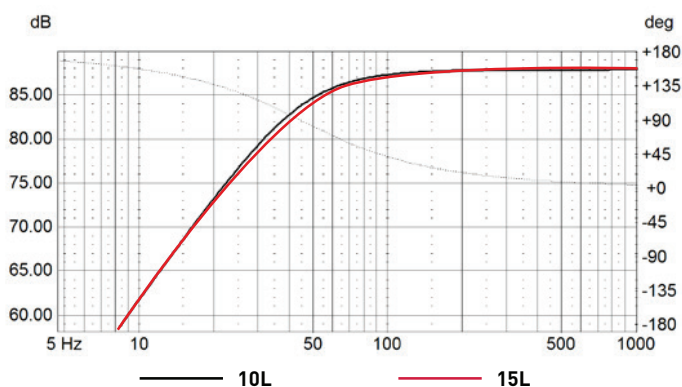
- FLAX® Cone
- Sealed and ported enclosure
- High power handling

SPECIFICATIONS

Nominal power	400W RMS	
Maximum power	800W	
Sensitivity (2.83V/1m)	86.7dB	
Cone	Flax	
Surround	Rubber	
Nom. impedance	4 Ohms	
DC resistance	3.7 Ohms	
VC diameter	50mm	2"
VC height	35mm	1 ³ / ₈ "
Former	Glass Fiber	
Layers	4	
Wire	Copper	
Inductance	2.7 mH	
Xmax	14mm	0 ⁹ / ₁₆ "
Magnet dxh (mm)	145 x 40mm	5 ¹¹ / ₁₆ " x 1 ⁹ / ₁₆ "
Flux density	0.75T	
Gap height	8mm	0 ⁵ / ₁₆ "
Net weight	5800g	11.6 lbs

FREQUENCY RESPONSE / IMPEDANCE

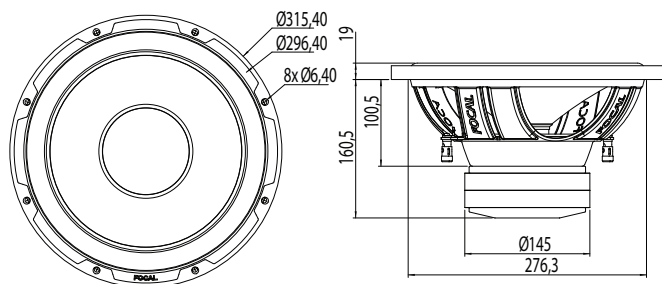
Sealed enclosure



PARAMETERS

Fs	28Hz	
Vas	70L	
Qts	0.47	
Qes	0.51	
Qms	5.6	
Re	3.7 Ohms	
Sd	510cm ²	
Cms	0.19 mm/N	
Mms	178g	
BL	15.3 N/A	
SPL	86.7 dB	

MECHANICAL DRAWING



SUGGESTED APPLICATION

Sealed enclosure		Ported enclosure			
Volume	F-3 (Hz)	Volume	F-3 (Hz)	Ø port	Port length
30L 1.05 cu.ft.	45 Hz	40L 1.4 cu.ft.	32 Hz	8 cm - 3 ⁵ / ₃₂ "	35 cm - 13 ²⁵ / ₃₂ "
35L 1.23 cu.ft.	44 Hz	45L 1.58 cu.ft.	30 Hz	8 cm - 3 ⁵ / ₃₂ "	35 cm - 13 ²⁵ / ₃₂ "
40L 1.4 cu.ft.	43 Hz	50L 1.76 cu.ft.	29 Hz	8 cm - 3 ⁵ / ₃₂ "	35 cm - 13 ²⁵ / ₃₂ "
		60L 2.11 cu.ft.	27 Hz	8 cm - 3 ⁵ / ₃₂ "	35 cm - 13 ²⁵ / ₃₂ "